

---

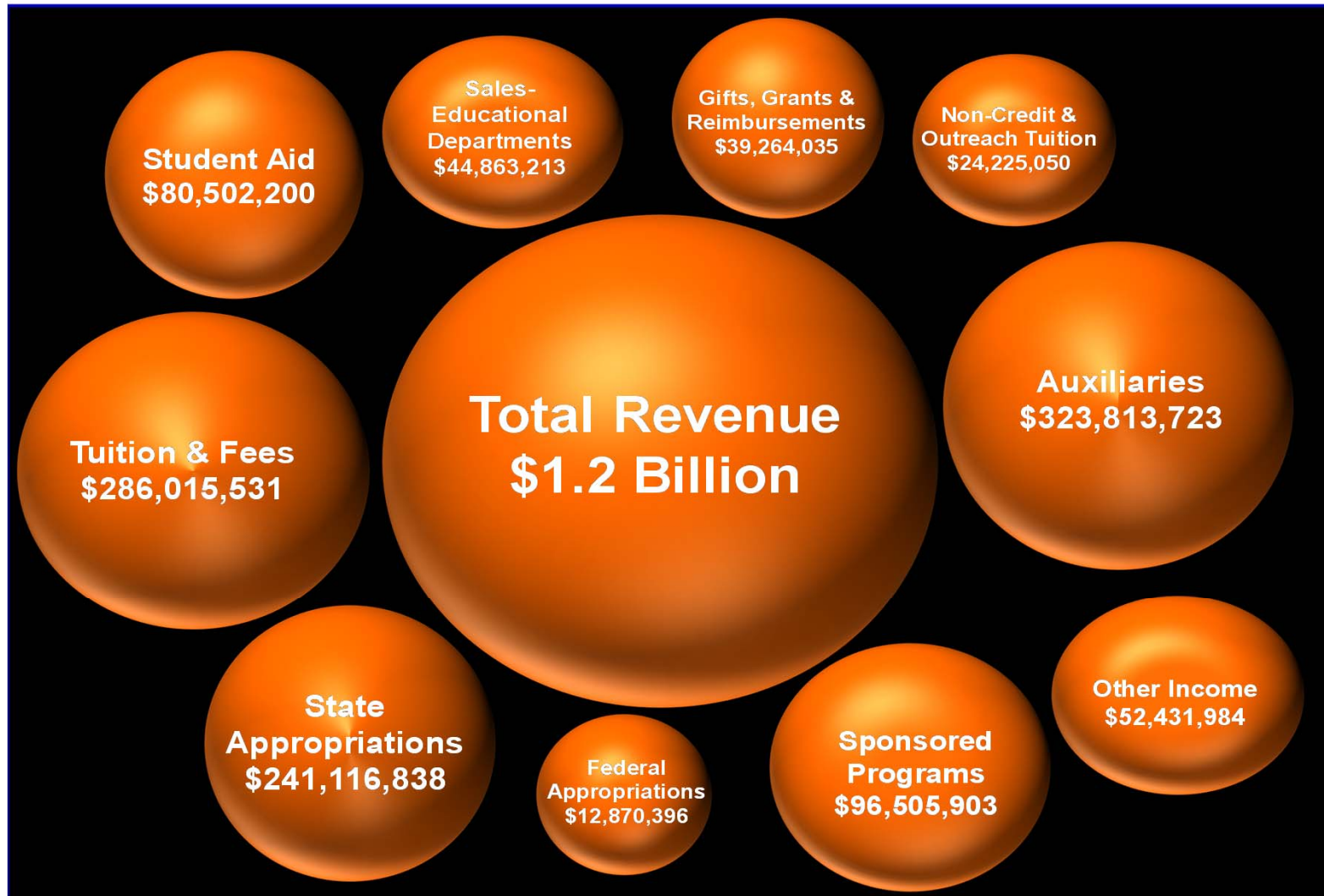
# University Budget Committee Meeting July 24, 2014

---

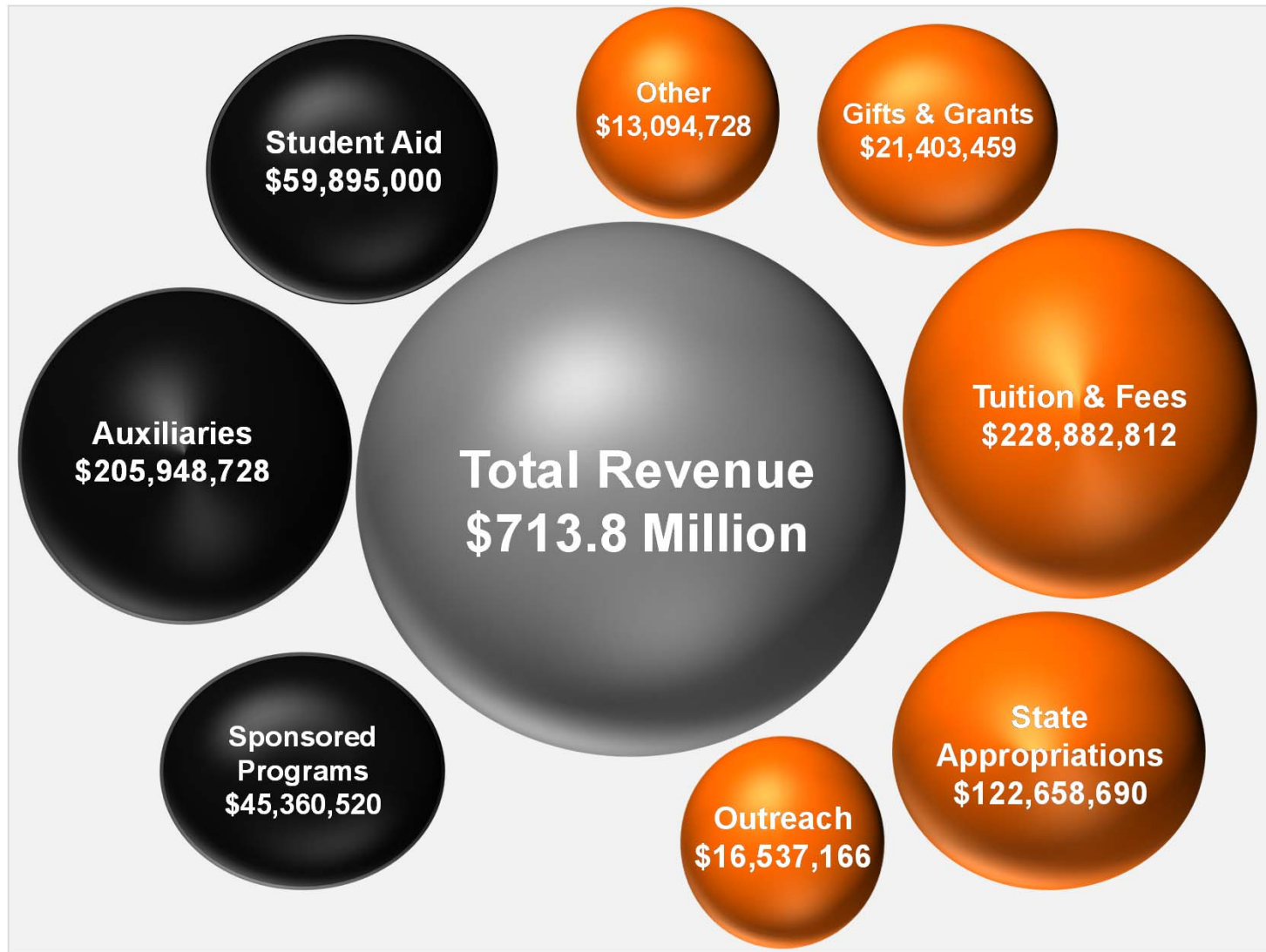


*America's Brightest* **ORANGE**

# Sources of Revenue - All Agencies



# Sources of Revenue – General University





# Education & General Budget

Revenue	FY 2015 Budget	% of Total
State Appropriated Funds	\$122,658,690	30.5%
Resident Tuition	52,379,728	13.0%
Nonresident Tuition	110,043,597	27.3%
Student Fees - Mandatory & Academic Service Fees	66,459,487	16.5%
Outreach Tuition	16,537,166	4.1%
Gifts and Grants	23,098,110	5.7%
Other Income	11,400,077	2.8%
<b>Totals</b>	<b>\$402,576,855</b>	<b>100.00%</b>



# Education & General Budget

Function	FY 2015 Budget	% of Total
Instruction	\$144,051,380	35.8%
Research	41,860,862	10.4%
Public Service	5,274,246	1.3%
Academic Support - Admin Areas	29,739,733	7.4%
Academic Support - Academic Areas	34,715,066	8.6%
Student Services	21,985,901	5.5%
Institutional Support	19,268,671	4.8%
Operation and Maintenance of Plant	43,150,215	10.7%
Scholarships and Fellowships	62,530,781	15.5%
<b>Totals</b>	<b>\$402,576,855</b>	<b>100.00%</b>



# Education & General Budget

Object	FY 2015 Budget	% of Total
Faculty Salaries	\$102,348,841	25.4%
Professional Salaries	50,921,497	12.6%
Classified Salaries and Other Wages	24,038,513	6.0%
Fringe Benefits	55,540,139	13.8%
Professional Services	613,000	0.2%
Personnel Service	<u>\$233,461,990</u>	<u>58.0%</u>
Travel	3,161,177	0.8%
Utilities	17,650,810	4.4%
Supplies and Other Operating Expenses	62,440,046	15.5%
Property, Furniture and Equipment	14,200,554	3.5%
Library Books and Periodicals	9,131,497	2.3%
Scholarships and Other Assistance	<u>62,530,781</u>	<u>15.5%</u>
<b>Totals</b>	<b>\$402,576,855</b>	<b>100.00%</b>

7



*America's Brightest* **ORANGE**

---

# Sources of New Funds

---

Tuition & Mandatory Fee Increase	\$1,278,000
Block Tuition	1,384,282
Enrollment Growth	4,165,718
Outreach Funds - Moving to 60/40 Split	2,400,000
Other New Sources of Funds	<u>3,049,000</u>
<b>Total Estimated New/Reallocated Funds</b>	<b>\$12,277,000</b>





---

# Use of New Funds

---

Mandatory Cost Increases	\$2,541,000
New Faculty Positions	3,243,000
Faculty Promotions and Tenure	291,000
Post-Tenure Review Program	432,000
Information Technology Initiatives	626,000
Academic Student Support	627,000
Compliance Issues	701,000
Additional College Commitments	299,000
Retention Commitments	964,000
Tuition & Fee Waivers	<u>2,553,000</u>
<b>Total Estimated Cost Increases/Loss of Funds</b>	<b>\$12,277,000</b>



---

# Fund Balance

---

Estimated Fund Balance at June 30, 2014: \$89,844,045

Actual Fund Balance at June 30, 2014: \$92,276,238

SRA-3 Schedule C

Projected Fund Balance at June 30, 2015: \$39,644,045



---

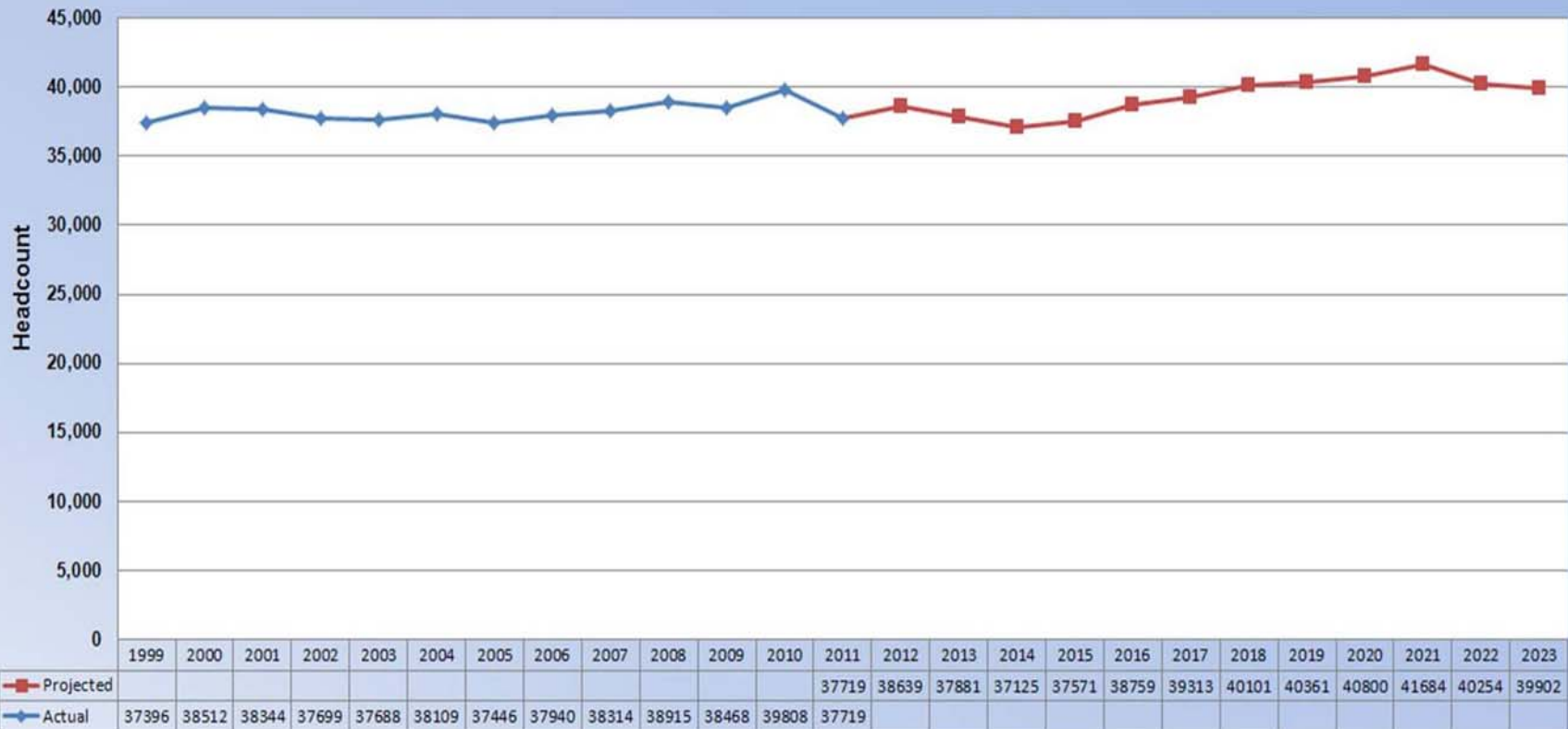
# Planning Considerations for FY 2015

---

- ❖ Utilities and operations for new buildings
- ❖ Managing enrollment growth
- ❖ Implementing block tuition
- ❖ Deploying Student Success Collaborative/“Finish In Four”
- ❖ Associating pay increases with cumulative review
- ❖ Reviewing options to become a self-insured employer
- ❖ State of Oklahoma funding issues for FY 2016



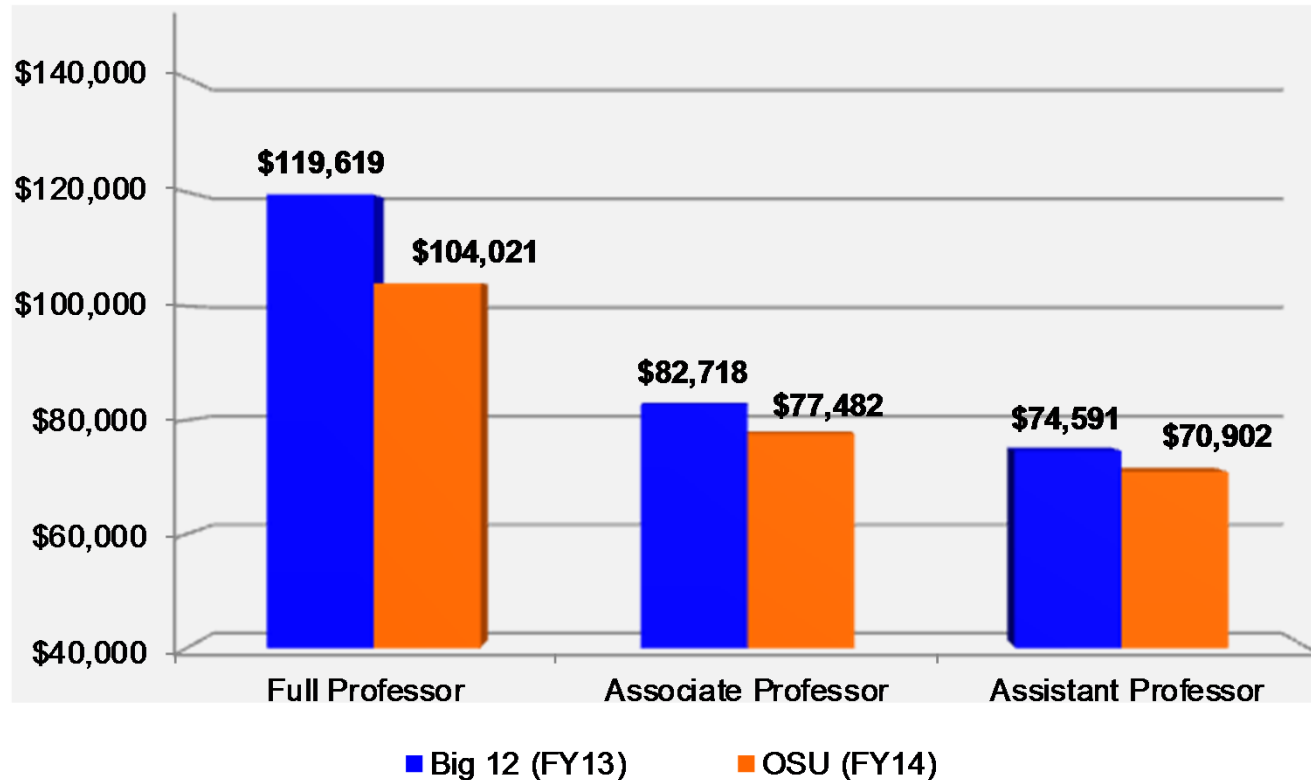
Oklahoma High School Graduates  
 Actual: 1999 through 2011  
 Projections: 2012 through 2023



Source: Oklahoma State Regents for Higher Education Cohort Survival . State Department of Education.



# Average Faculty Salaries By Rank OSU vs. Big 12 Average



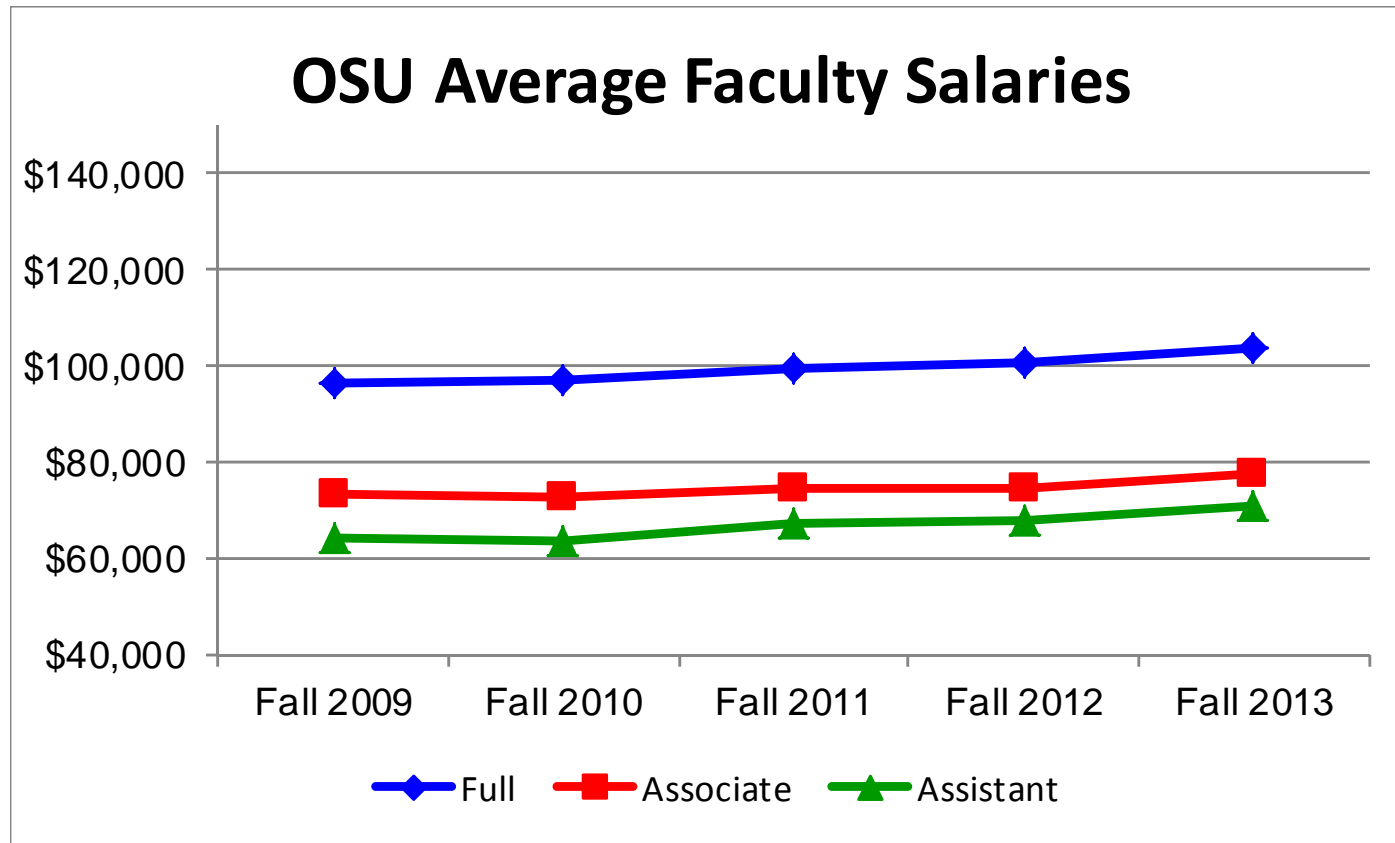
Assistant professors currently hired are being brought in closer to peer average. However, as faculty rank increases, the gap between OSU salaries and Big 12 average salaries continues to increase.

Note: All salaries are converted to 9-10 month equivalents, and exclude all professional programs.

**\$\$'s required to get OSU salaries up to the Big 12 Average = \$9.8 million**  
(includes the cost for salaries + benefits)



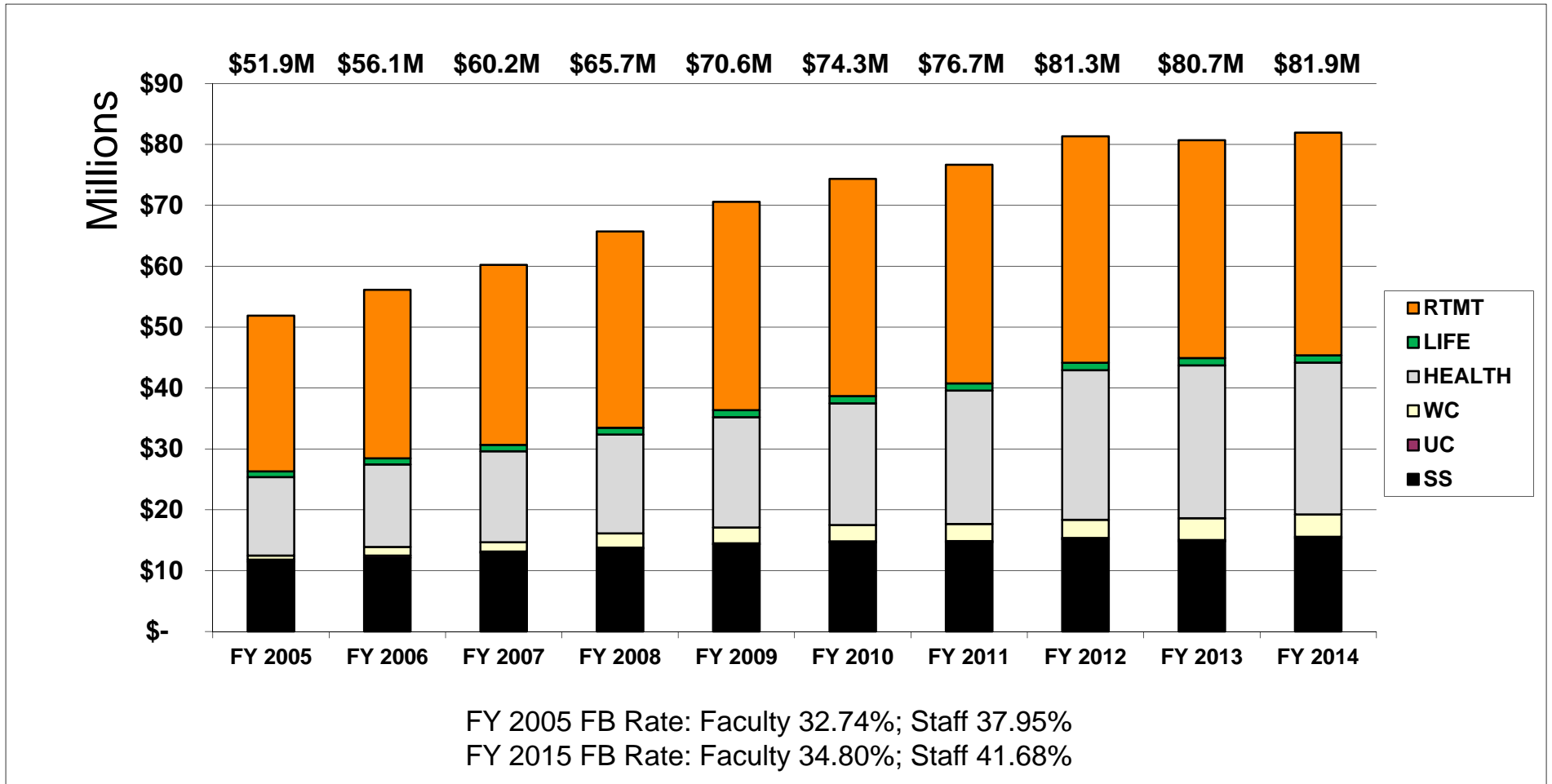
# Salary Compression Among Ranks at OSU



By hiring assistant professors closer to peer average, compression issues between assistant and associate professors have become increasingly common.



# Cost of Fringe Benefits





*America's Brightest* **ORANGE**